



TriLyte FH4 Wide Body Series

Page 1 of 2

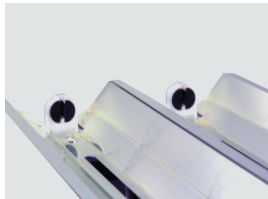
Surface Mounted Fluorescent, 4' Lengths,
23" Wide Body for 6 Lamp T8

Features

- Efficiency 84.8%
- Riveted 20 gauge chassis for superior strength
- Venting on sides allow for cooler operation
- Frameless wireguard design (See Options)
- Surface, stem or chain mounting options
- Contoured mirrored reflector for optimum efficiency
- Slim profile of 2 3/4" depth ideal for gymnasium applications where ceiling height may be an issue
- Optional wireguard protects lamps in gymnasium applications
- Occupancy Sensor for energy saving solutions (See Options)
- Ideal for Trade/Retail, Recreational and Industrial applications where efficiency and lighting control are required



Features



- * Contoured reflector technically designed to optimize lamp performance

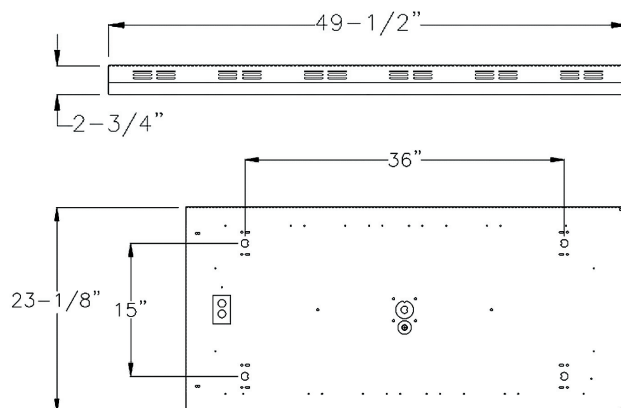
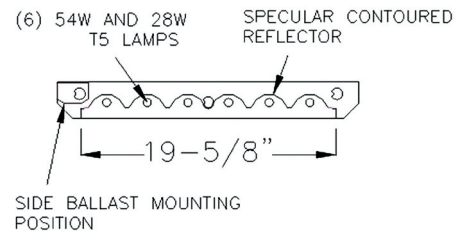


- * Vented details on housing profile allows for efficient running temperatures during operation



- * Self contained line voltage sensor. Specifically designed to mount via the 7/8" KO provided on either end of the TriLyte fixture. (Field Installed)
Cat no. FH360

Dimensions



Job Information

Type:

Job Name:

Cat. No.:

Lamp(s):

Volts/Ballast:

CFI Fluorescent - A Canlyte Brand

www.canlyte.com

Technical Information: (613) 938-6221 • Fax (613) 938-9576

525 Education Road, Cornwall, ON K6H 6C7

We reserve the right to change details of design, materials and finish.

Copyright 2005 Lightolier

Folio RF-0232-06



TriLyte FH4 Wide Body Series

Page 2 of 2

Surface Mounted Fluorescent, 4' Lengths,
23" Wide Body for 6 Lamp T8

Photometry

Model No. FH4C5DX63212005

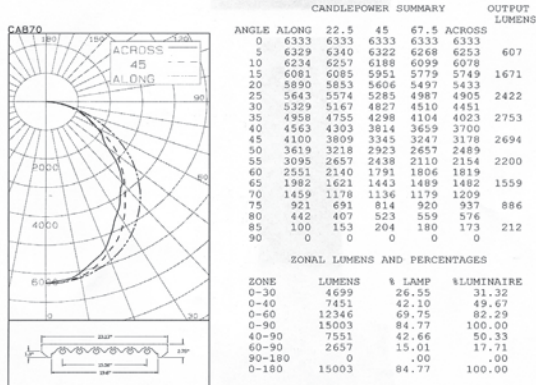


LIGHTING SCIENCES CANADA LTD.

440 Phillip St., Unit 19, Waterloo, Ontario, Canada N2L 5R9
Tel: (519) 746-3140 Fax: (519) 746-3156 lsc@lightingsciences.ca

CERTIFIED TEST REPORT NO. LSCA870
COMPUTED BY LSC PROGRAM **TEST-LITE**

CANLYTE 4' FLUORESCENT LUMINAIRE CAT. NO. FH4C5DX63212005
WITH WIDE POST PAINTED WHITE BODY AND SPECULAR CONTOURED REFLECTOR
SIX F32T8/TL841 32W T8 FLUORESCENT LAMPS. LUMEN RATING = 2950 LMS.
ONE ADVANCE 120V 3 OR 4-LAMP ELECTRONIC BALLAST NO. REL-4P32-SC
ONE ADVANCE 120V 1 OR 2-LAMP ELECTRONIC BALLAST NO. REL-2P32-SC



SONAL LUMENS AND PERCENTAGES

ZONE	LUMENS	% LAMP	LUMINAIRE
0-30	14599	26.55	31.32
0-40	7451	42.10	49.67
0-60	12346	69.75	82.29
0-90	15003	84.77	100.00
40-90	7551	42.66	50.33
60-90	2657	15.01	17.71
90-180	0	0.00	0.00
0-180	15003	84.77	100.00

** EFFICIENCY = 84.8% **

LUMINANCE SUMMARY-CD. / SQ. M.

ANGLE	ALONG	45	ACROSS
45	9504	7783	7393
55	8843	6991	6178
65	7686	5615	5769
75	5833	5161	5959
85	1889	3846	3264

TESTED ACCORDING TO IES PROCEDURES. TEST DISTANCE EXCEEDS FIVE

THIS REPORT IS BASED ON PUBLISHED INDUSTRY PROCEDURES - FIELD PERFORMANCE MAY VARY FROM LABORATORY

LIGHTING SCIENCES CANADA LTD.
440 PHILLIP ST., UNIT 19
WATERLOO, ONTARIO

CERTIFIED TEST REPORT NO. LSCA870
COMPUTED BY LSC PROGRAM **TEST-LITE**

CANLYTE 4' FLUORESCENT LUMINAIRE CAT. NO. FH4C5DX63212005
WITH WIDE POST PAINTED WHITE BODY AND SPECULAR CONTOURED REFLECTOR
SIX F32T8/TL841 32W T8 FLUORESCENT LAMPS. LUMEN RATING = 2950 LMS.
ONE ADVANCE 120V 3 OR 4-LAMP ELECTRONIC BALLAST NO. REL-4P32-SC
ONE ADVANCE 120V 1 OR 2-LAMP ELECTRONIC BALLAST NO. REL-2P32-SC

COEFFICIENTS OF UTILISATION

SONAL CAVITY METHOD

EFFECTIVE FLOOR CAVITY REFLECTANCE = .20

CC WALL	80	70	50	30	10	0
RCR	70 50 30 10 70 50 30 10 50 30 10 50 30 10 0	70 50 30 10 70 50 30 10 50 30 10 50 30 10 0	70 50 30 10 70 50 30 10 50 30 10 50 30 10 0	70 50 30 10 70 50 30 10 50 30 10 50 30 10 0	70 50 30 10 70 50 30 10 50 30 10 50 30 10 0	70 50 30 10 70 50 30 10 50 30 10 50 30 10 0
0	1.011.011.011.01	.99 .99 .99 .99	.94 .94 .94 .94	.90 .90 .90 .90	.86 .86 .86 .86	.85
1	.93 .90 .87 .84	.91 .88 .85 .82	.84 .82 .80 .81	.79 .77 .78 .76	.75 .75 .75 .73	.73
2	.86 .80 .75 .70	.84 .78 .73 .69	.75 .71 .68 .72	.69 .66 .67 .65	.63 .63 .63 .63	.63
3	.79 .71 .65 .60	.77 .70 .64 .59	.67 .62 .58 .65	.61 .57 .63 .59	.56 .55 .55 .55	.55
4	.73 .64 .57 .52	.71 .62 .54 .51	.60 .55 .51 .58	.54 .50 .57 .53	.49 .47 .49 .47	.47
5	.67 .57 .49 .44	.65 .56 .49 .44	.54 .48 .44 .52	.47 .43 .51 .48	.42 .41 .42 .41	.41
6	.62 .51 .44 .39	.60 .50 .43 .38	.49 .43 .38 .47	.42 .38 .46 .41	.37 .36 .37 .36	.36
7	.57 .46 .39 .34	.56 .45 .39 .34	.44 .38 .34 .43	.37 .33 .42 .37	.33 .31 .33 .31	.31
8	.53 .41 .35 .30	.52 .41 .34 .30	.40 .34 .29 .39	.33 .29 .38 .33	.29 .27 .29 .27	.27
9	.49 .38 .31 .26	.47 .37 .30 .26	.36 .30 .26 .35	.29 .25 .34 .29	.25 .24 .25 .24	.24
10	.45 .34 .27 .23	.44 .34 .27 .23	.33 .27 .23 .32	.26 .23 .31 .26	.22 .21 .22 .21	.21

DETERMINED IN ACCORDANCE WITH CURRENT IES PUBLISHED PROCEDURES
LUMINAIRE INPUT WATTS = 169.1
LABORATORY RESULT MAY NOT BE REPRESENTATIVE OF FIELD PERFORMANCE.
BALLAST FACTORS HAVE NOT BEEN APPLIED.

THIS REPORT IS BASED ON PUBLISHED INDUSTRY PROCEDURES - FIELD PERFORMANCE MAY VARY FROM LABORATORY

Ordering Information

Explanation of Catalog Number. Example: FH4C5DWW63212005

FH	4	C	5	D	WW	6	32	120	O5
FH SERIES TRILYTE	FIXTURE LENGTH 4 = 4' Length	REFLECTOR	FIXTURE WIDTH 5 = 23 1/8"	LIGHT DIRECTION D = Direct	LENS / SHEILDING TYPE	LAMP QUANTITY 6 = 6 lamp	LAMP 32 = 32watt T8 (nominal 48")	VOLTAGE UNV-120/277 277 347	BALLAST TYPE O5 = One 4-lamp and one 2-lamp I.S. THD<20% O3 = Two 4-lamp I.S. THD<20%
HEAVY DUTY SURFACE FIXTURE		C = Contoured Specular Inside Reflector S = Flat Design Specular Inside Reflector		WW = White Wireguard / No Lens VA = White Wireguard / Pattern 12 .095" nominal lens VB = White Wireguard / Pattern 12 .125" nominal lens XX = No Shielding					

Options/Accessories

Emergency Power Pack : Factory installed emergency power pack includes charger and inverter concealed in fixture channel. Upon loss of AC power, operates one lamp at high lumen output for a period of 90 minutes. For 347v. Consult Factory

Suffix: E (std. Bodine B100CAN)

Electrical Wiring Options : Consult factory.

Stem and Canopy Kits: Suspend luminaire 12",18",24",36" and 48" from surface. (Four per luminaire is recommended)

Catalogue numbers: STKF12, STKF18, STKF24, STKF36, STKF48

Chain Suspension Option: : 24" Chain Suspension Kit (Two per fixture is required)

Order: EE9HC

Sensor : Order cat. no. FH360 for Line Voltage Sensor (Sold Separately / Field Installed)

Specifications

Materials: Chassis parts are die-formed code 20 gauge cold rolled steel. Finish: Chassis exterior post painted in a baked polyester powdercoat finish.

Cavity: White baked polyester powdercoat, min. reflectance 86%

Reflector: Contoured or Flat Design specular reflector. 95% reflectivity

Electrical : Thermally protected class "P" ballast C.B.M. approved, non PCB. If K.O. is within 3" of ballast, use wire suitable for at least 90°.

Labels: cCSAus listed.

Job Information

Type:

CFI Fluorescent - A Canlyte Brand

www.canlyte.com

Technical Information: (613) 938-6221 • Fax (613) 938-9576

525 Education Road, Cornwall, ON K6H 6C7

We reserve the right to change details of design, materials and finish.

Copyright 2005 Lightolier

Folio RF-0232-06

CFI FLUORESCENT